

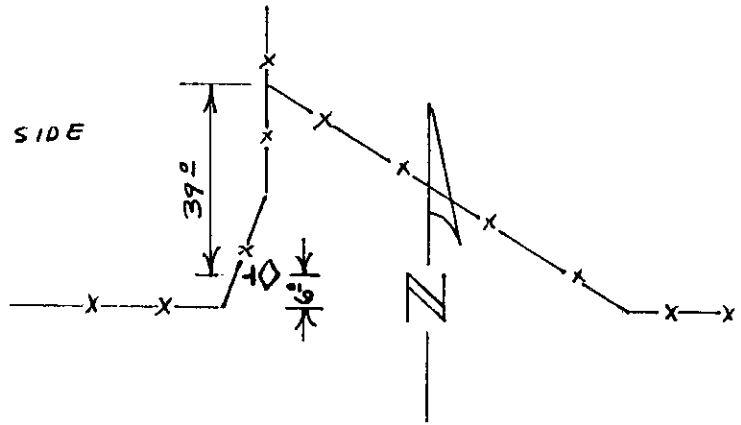
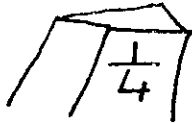
# State of Wyoming Corner Record

(IN COMPLIANCE WITH THE CORNER PERPETUATION AND FILING ACT, WYOMING STATUTES, 1977 SECTION 33-29-140, ET. SEQ., AND THE RULES AND REGULATIONS OF THE BOARD OF PROFESSIONAL ENGINEERS AND PROFESSIONAL LAND SURVEYORS)

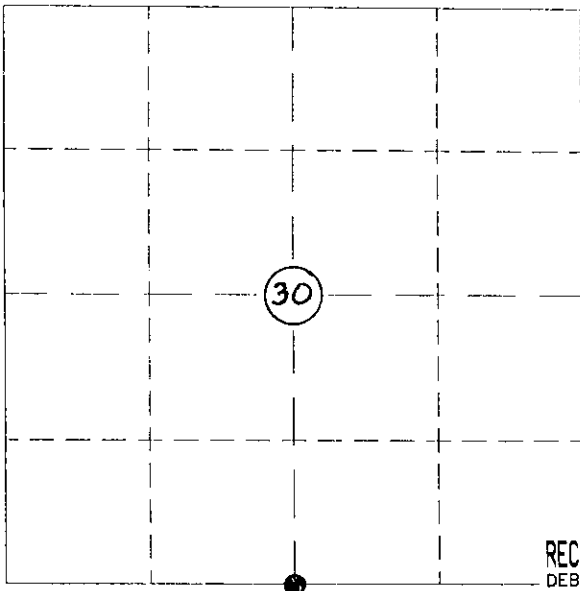
REVERSE SIDE OF THIS FORM MAY BE USED IF MORE SPACE IS NEEDED.

RECORD OF ORIGINAL SURVEY AND CITATION OF SOURCE OF HISTORICAL INFORMATION (IF CORNER IS LOST OR OBLITERATED). DESCRIPTION OF CORNER MONUMENTATION EVIDENCE FOUND AND/OR MONUMENT AND ACCESSORIES ESTABLISHED TO PERPETUATE THE LOCATION OF THIS CORNER. SKETCH OF RELATIVE MONUMENT, ACCESSORIES, AND REFERENCE POINTS WITH COURSE AND DISTANCE TO ADJACENT CORNER(S) (IF DETERMINED IN THIS SURVEY). METHOD AND RATIONALE FOR REESTABLISHMENT OF LOST OR OBLITERATED CORNER.

FOUND SQUARE BLACK STONE  
 6" X 4" 7" ABOVE GROUND  
 CLEARLY MARKED ON SOUTH FACE  
 SET A STEEL FENCE POST @ WEST SIDE  
 OF STONE



## MONUMENT LOCATION



See sketch  
on back

  
 RECORDED 11/24/2004 AT 12:10 PM REC# 403335 BK# 1850 PG# 153  
 DEBRA K. LATHROP, CLERK OF LARAMIE COUNTY, WY PAGE 1 OF 2

DATE OF FIELD WORK: 11/12/04

OFFICE REFERENCE: 04209

## CROSS INDEX PLAT

FIRM/AGENCY, ADDRESS

THIS CORNER RECORD WAS PREPARED BY ME OR UNDER MY DIRECTION AND SUPERVISION.

1	2	3	4	5	6	7	8	9	10	11	12	13	14	15	16	17	18	19	20	21	22	23	24	25	
A	+	+	+	+	+	+	+	+	+	+	+	+	+	+	+	+	+	+	+	+	+	+	+	+	A
B	+	+	+	+	+	+	+	+	+	+	+	+	+	+	+	+	+	+	+	+	+	+	+	+	B
C	+	6	+	+	5	+	+	+	4	+	+	+	+	3	+	+	+	+	2	+	+	+	+	+	C
D	+	+	+	+	+	+	+	+	+	+	+	+	+	+	+	+	+	+	+	+	+	+	+	+	D
E	+	+	+	+	+	+	+	+	+	+	+	+	+	+	+	+	+	+	+	+	+	+	+	+	E
F	+	+	+	+	+	+	+	+	+	+	+	+	+	+	+	+	+	+	+	+	+	+	+	+	F
G	+	7	+	+	8	+	+	+	9	+	+	+	+	10	+	+	+	+	11	+	+	+	+	+	G
H	+	+	+	+	+	+	+	+	+	+	+	+	+	+	+	+	+	+	+	+	+	+	+	+	H
J	+	+	+	+	+	+	+	+	+	+	+	+	+	+	+	+	+	+	+	+	+	+	+	+	J
K	+	+	+	+	+	+	+	+	+	+	+	+	+	+	+	+	+	+	+	+	+	+	+	+	K
L	+	+	+	+	+	+	+	+	+	+	+	+	+	+	+	+	+	+	+	+	+	+	+	+	L
M	+	+	+	+	+	+	+	+	+	+	+	+	+	+	+	+	+	+	+	+	+	+	+	+	M
N	+	+	+	+	+	+	+	+	+	+	+	+	+	+	+	+	+	+	+	+	+	+	+	+	N
O	+	+	+	+	+	+	+	+	+	+	+	+	+	+	+	+	+	+	+	+	+	+	+	+	O
P	+	+	+	+	+	+	+	+	+	+	+	+	+	+	+	+	+	+	+	+	+	+	+	+	P
Q	+	+	+	+	+	+	+	+	+	+	+	+	+	+	+	+	+	+	+	+	+	+	+	+	Q
R	+	+	+	+	+	+	+	+	+	+	+	+	+	+	+	+	+	+	+	+	+	+	+	+	R
S	+	+	+	+	+	+	+	+	+	+	+	+	+	+	+	+	+	+	+	+	+	+	+	+	S
T	+	+	+	+	+	+	+	+	+	+	+	+	+	+	+	+	+	+	+	+	+	+	+	+	T
U	+	+	+	+	+	+	+	+	+	+	+	+	+	+	+	+	+	+	+	+	+	+	+	+	U
V	+	+	+	+	+	+	+	+	+	+	+	+	+	+	+	+	+	+	+	+	+	+	+	+	V
W	+	+	+	+	+	+	+	+	+	+	+	+	+	+	+	+	+	+	+	+	+	+	+	+	W
X	+	+	+	+	+	+	+	+	+	+	+	+	+	+	+	+	+	+	+	+	+	+	+	+	X
Y	+	+	+	+	+	+	+	+	+	+	+	+	+	+	+	+	+	+	+	+	+	+	+	+	Y
Z	+	+	+	+	+	+	+	+	+	+	+	+	+	+	+	+	+	+	+	+	+	+	+	+	Z
1	2	3	4	5	6	7	8	9	10	11	12	13	14	15	16	17	18	19	20	21	22	23	24	25	

COFFEY & ASSOCIATES, L.L.C.  
 903 GRAND AVENUE  
 LARAMIE, WYOMING 82070  
 TELEPHONE NUMBER: (307)742-7425

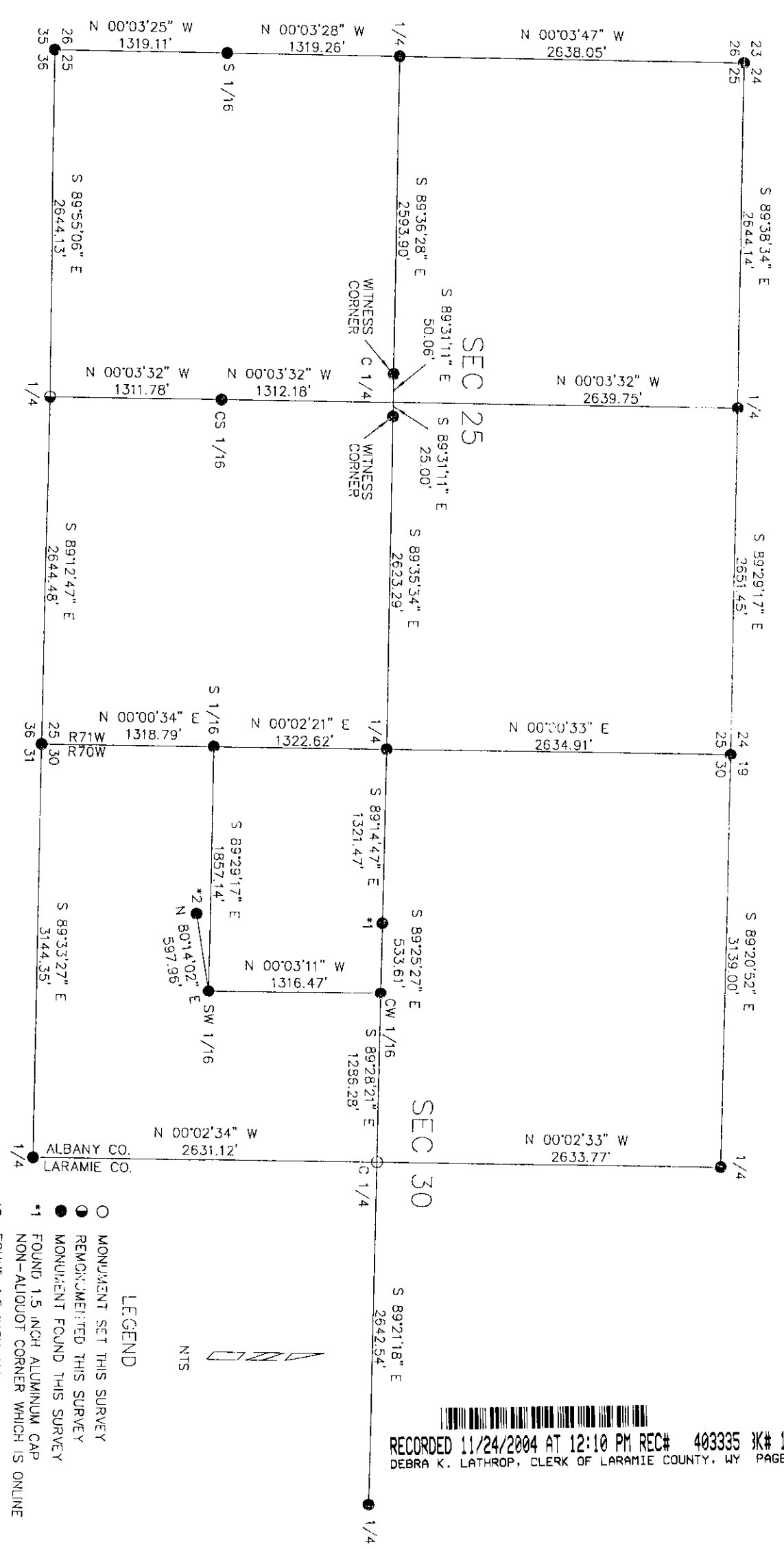
SEAL & SIGNATURE



CORNER NAME: S 1/4 Sec 30, T 13N, R 70W, 6th PM

COUNTY: Albany/Laramie

CROSS-INDEX NUMBER: 4-3



RECORDED 11/24/2004 AT 12:10 PM REC# 403335 BK# 1850 PG# 153 A  
 DEBRA K. LATHROP, CLERK OF LARAMIE COUNTY, WY PAGE 2 OF 2